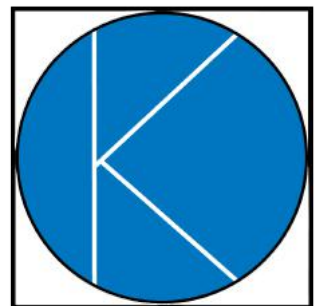
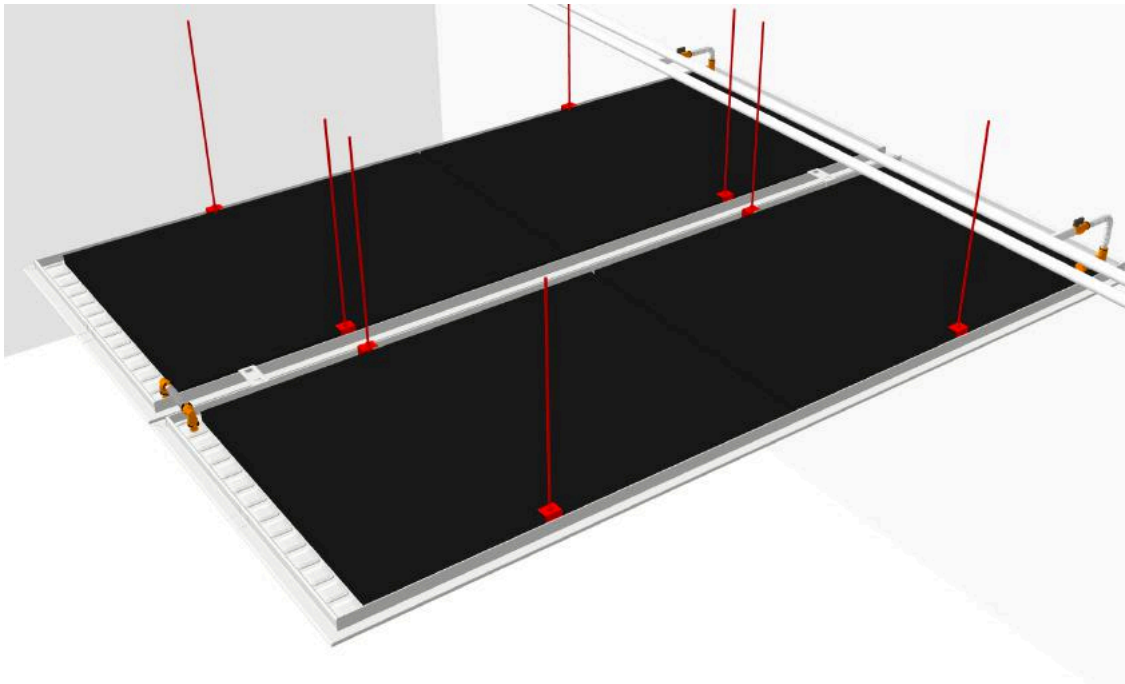


# KIGO standard

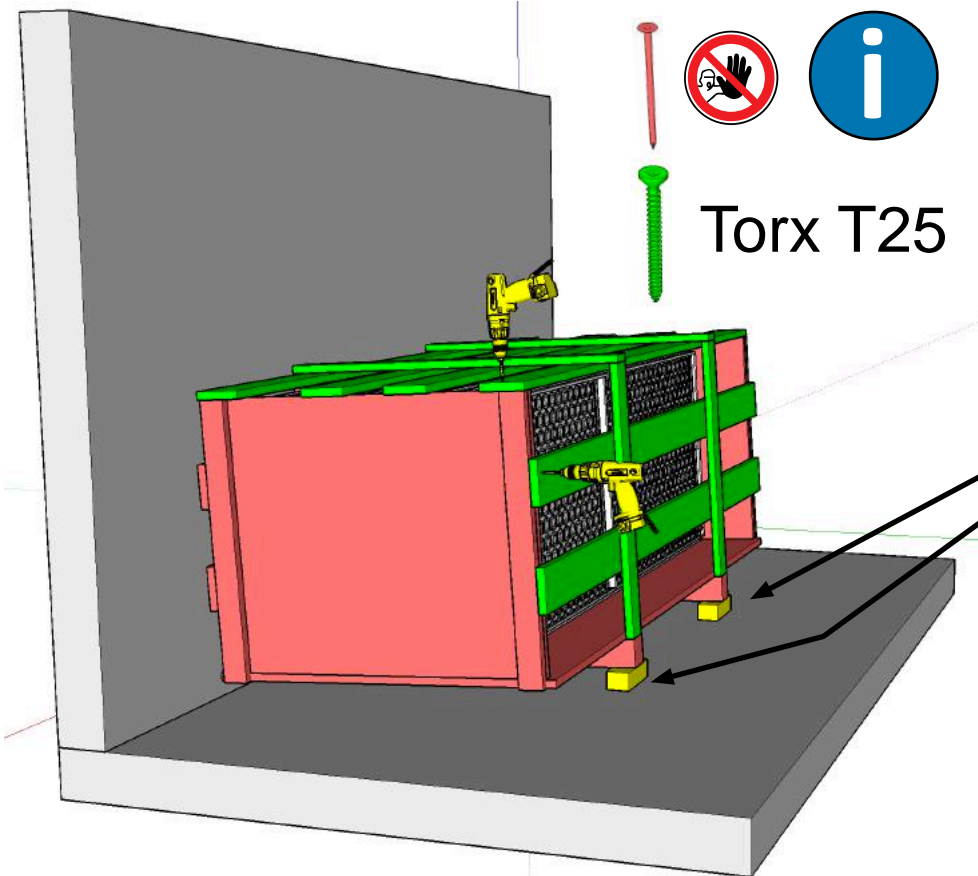


Suspension directe par tige filetée  
Direktes Aufhängen an Gewindestange

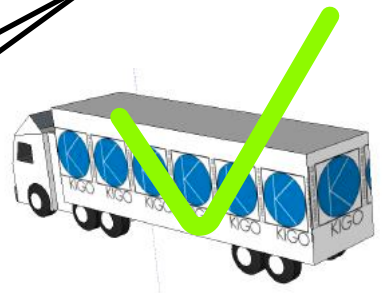
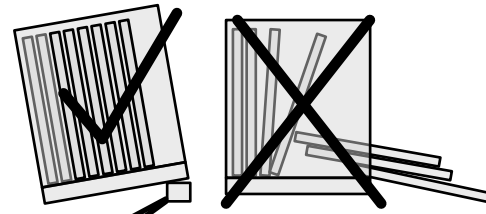


by SOLTOP Energie AG

**KIGO**<sup>®</sup>



Torx T25



08.20.15RD.GRAISSE



08.20.15RD.01.03



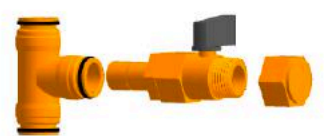
08.20.15RD.01.02



16.FN4995.401906



08.20.15RD.09



08.03.03.RD04.01.M8



08.20.15RD.05



08.05.RD15.LLL

08.03.00.RD06



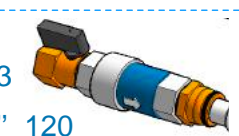
08.20.15RD.01.01



OPTION

01.04.TS13.3

05.09.06.STAB.1/2" \_120

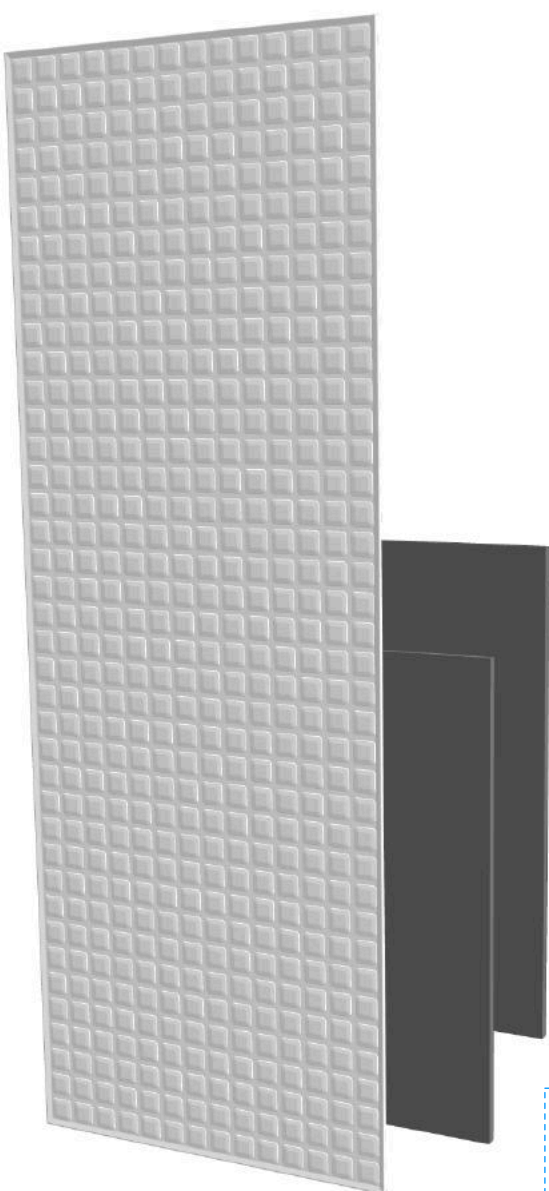


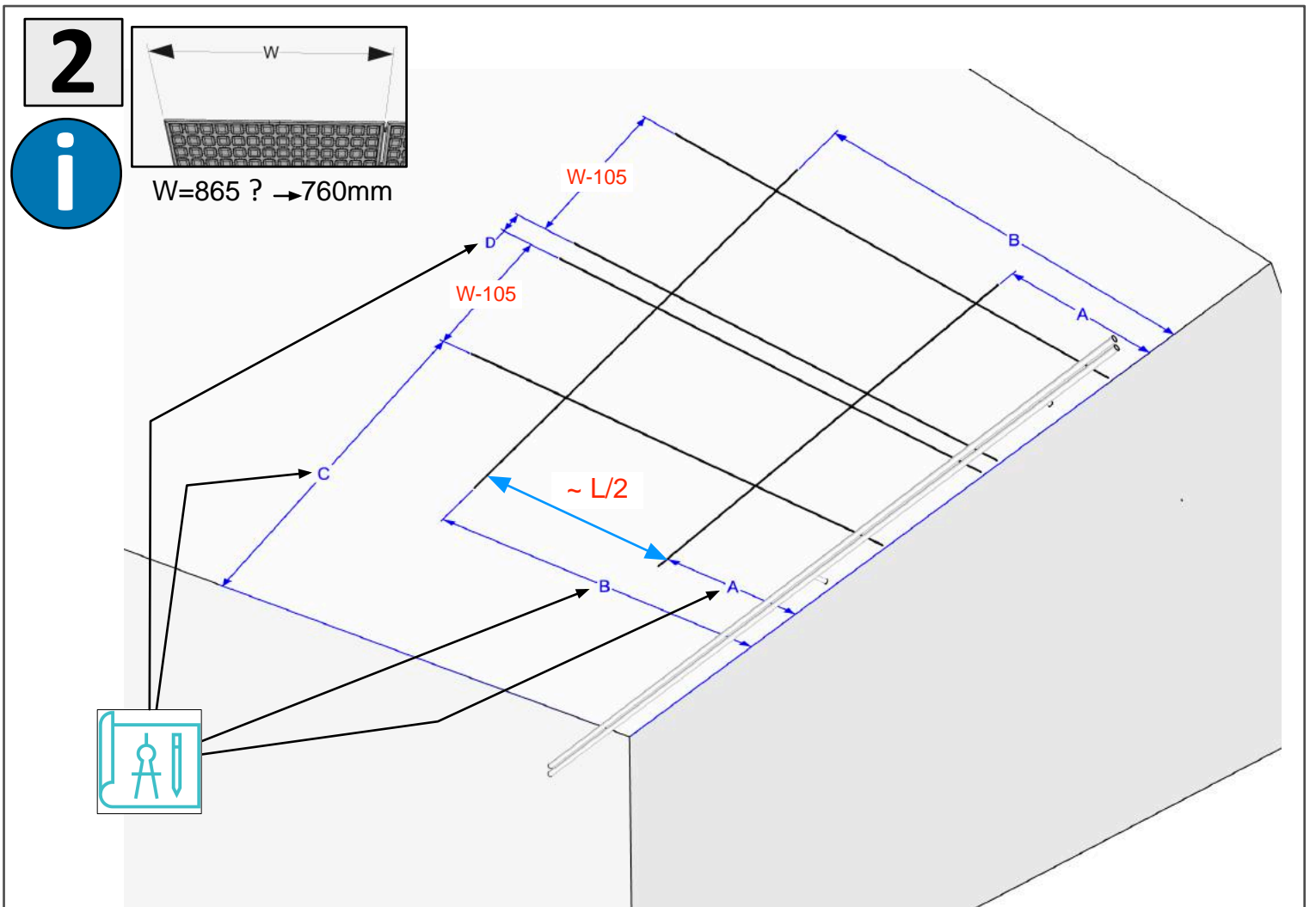
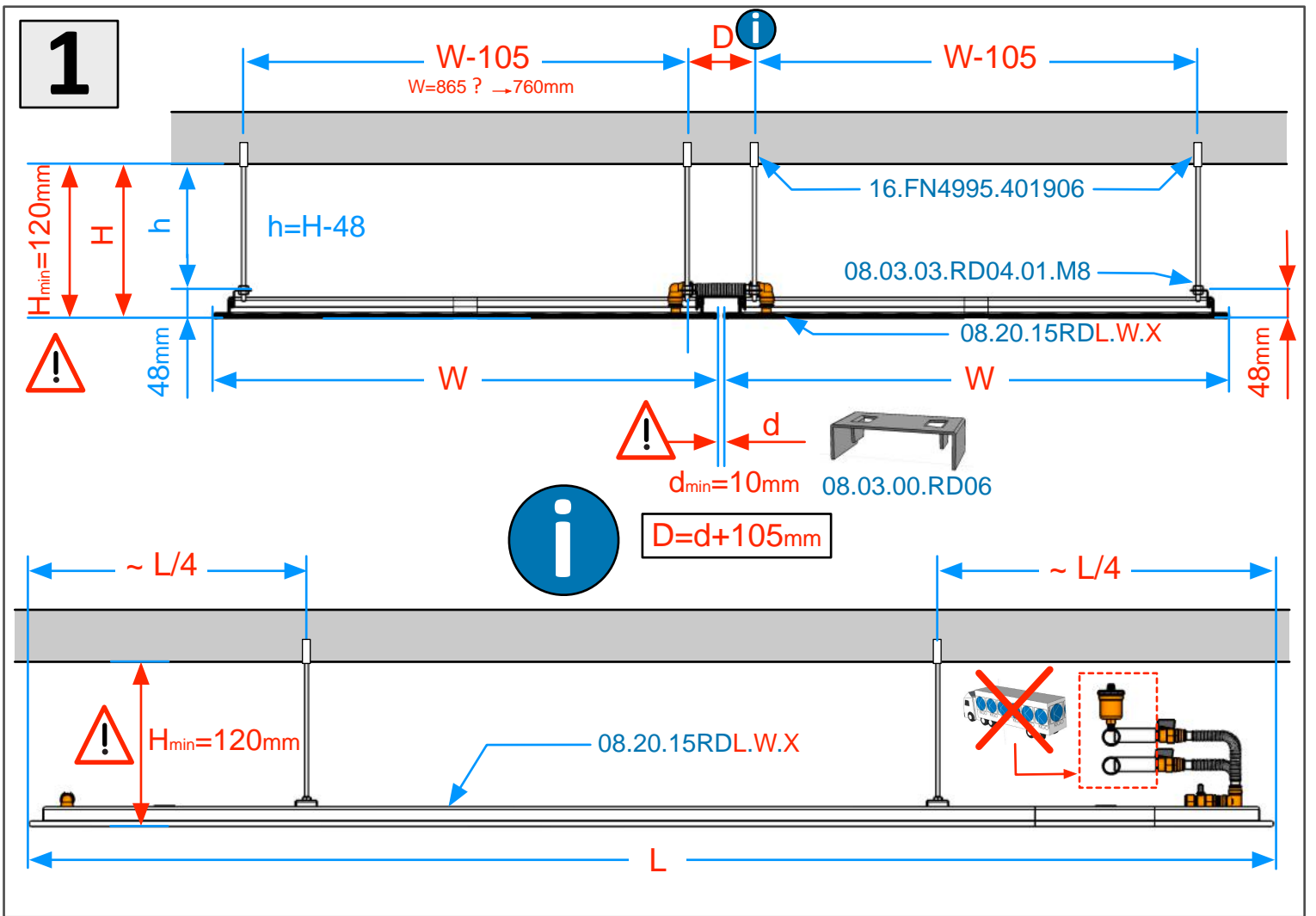
08.20.15RD.06



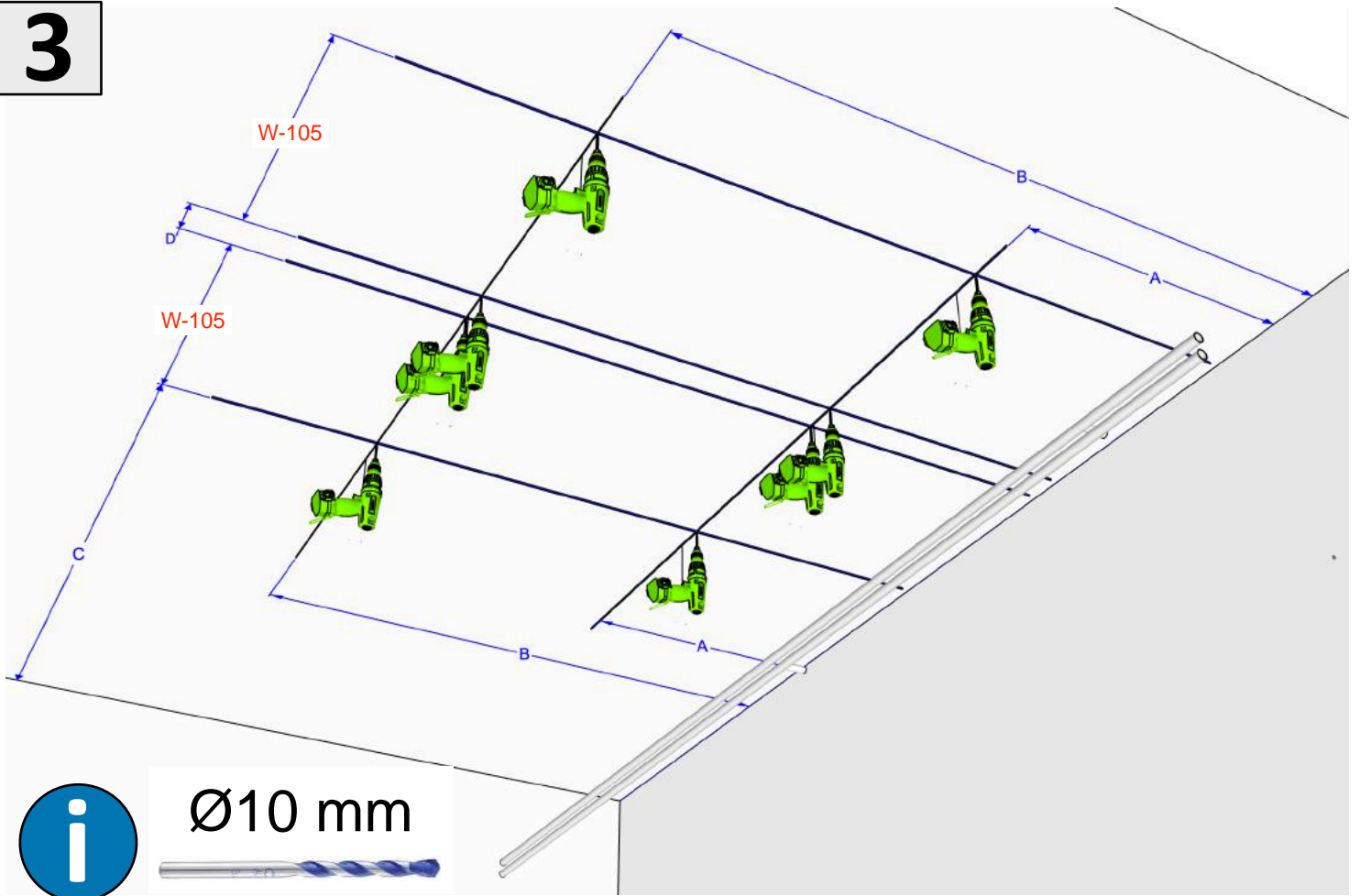
08.20.15RD.01.MF

08.20.15RDL.W.X

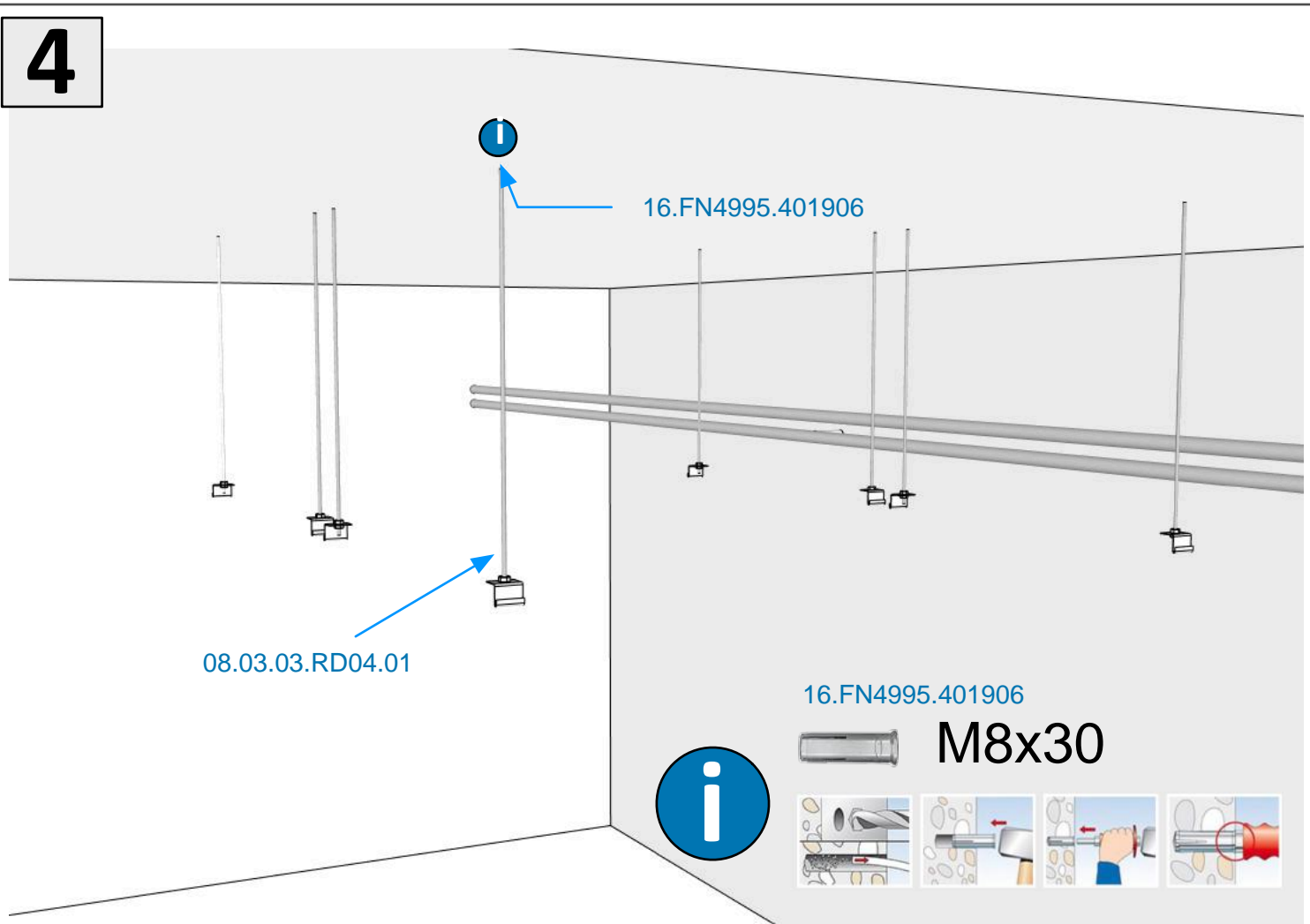




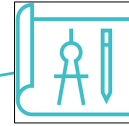
3



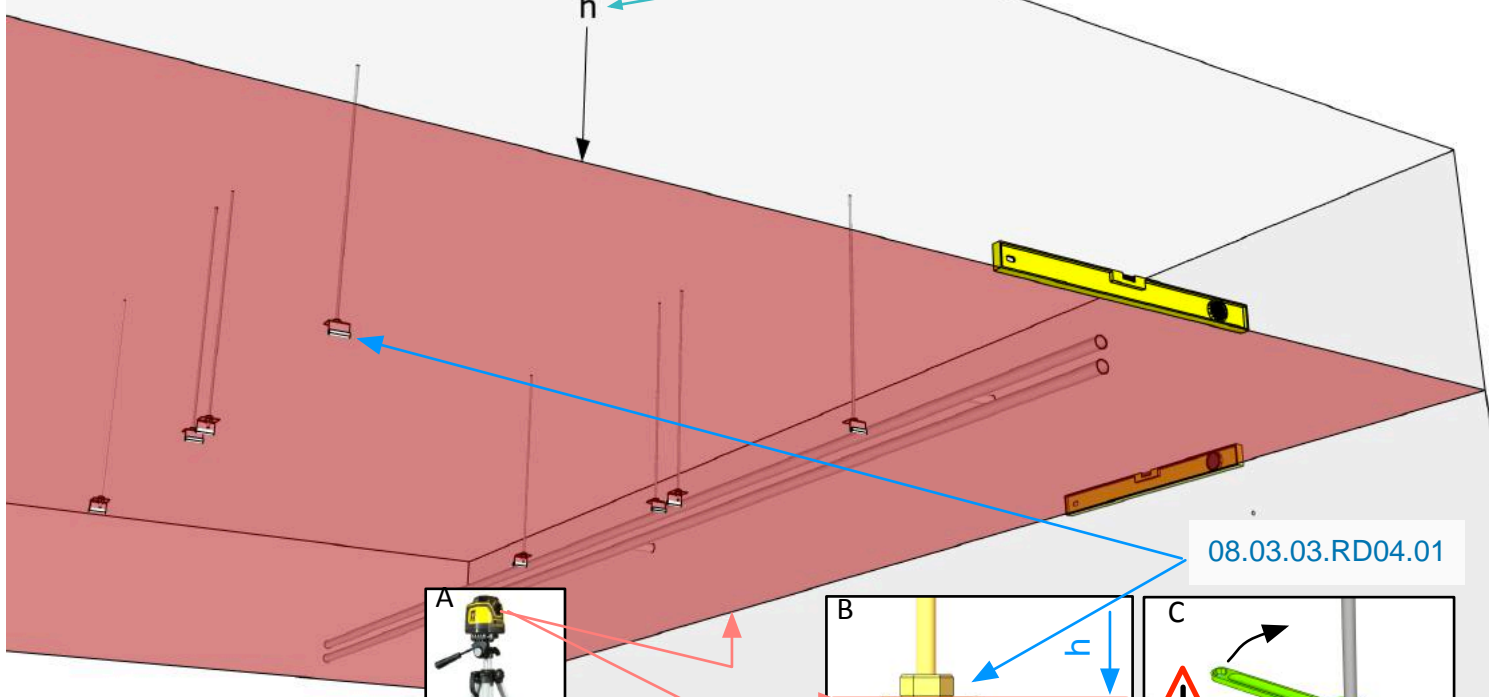
4



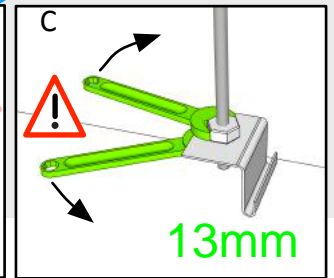
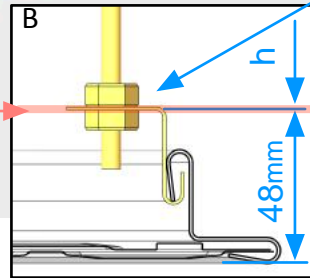
5



h



08.03.03.RD04.01

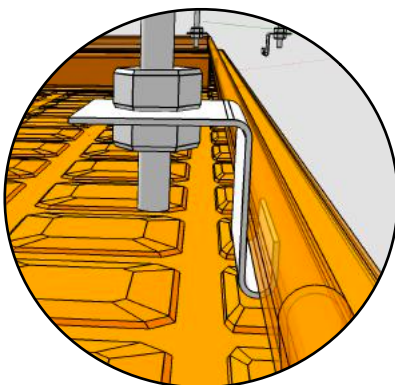
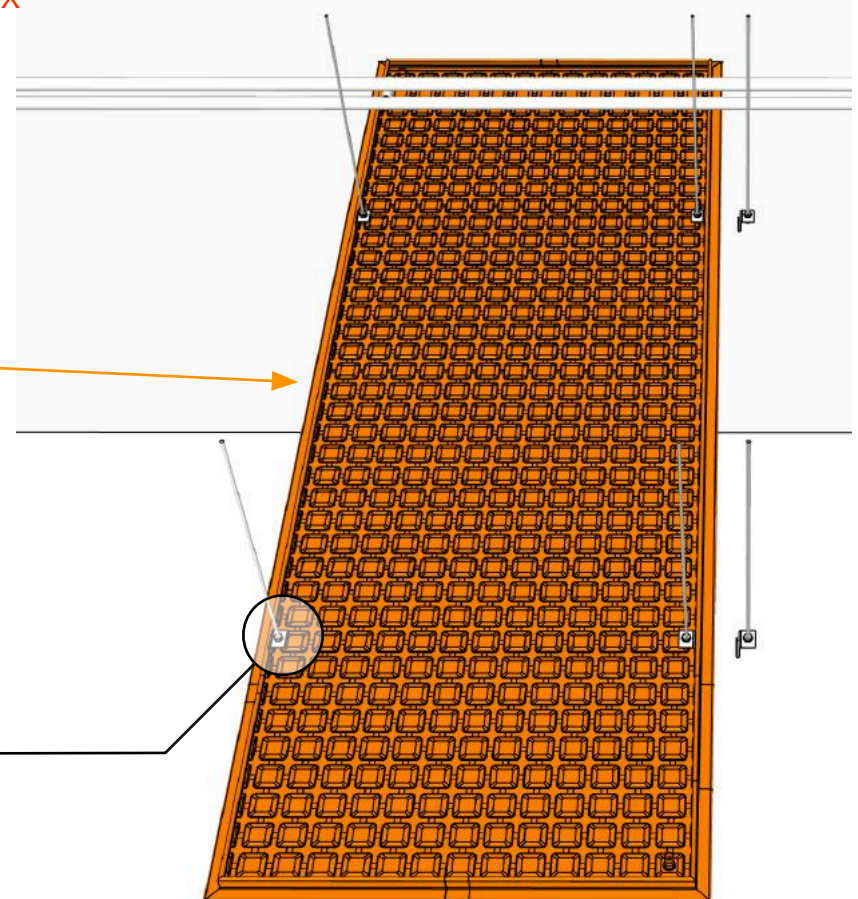
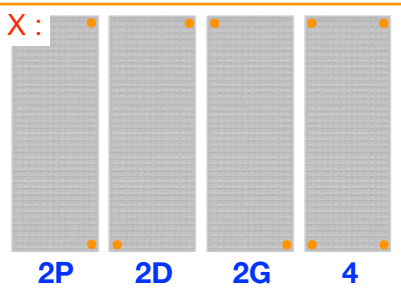


6



08.20.15RDL.W.X

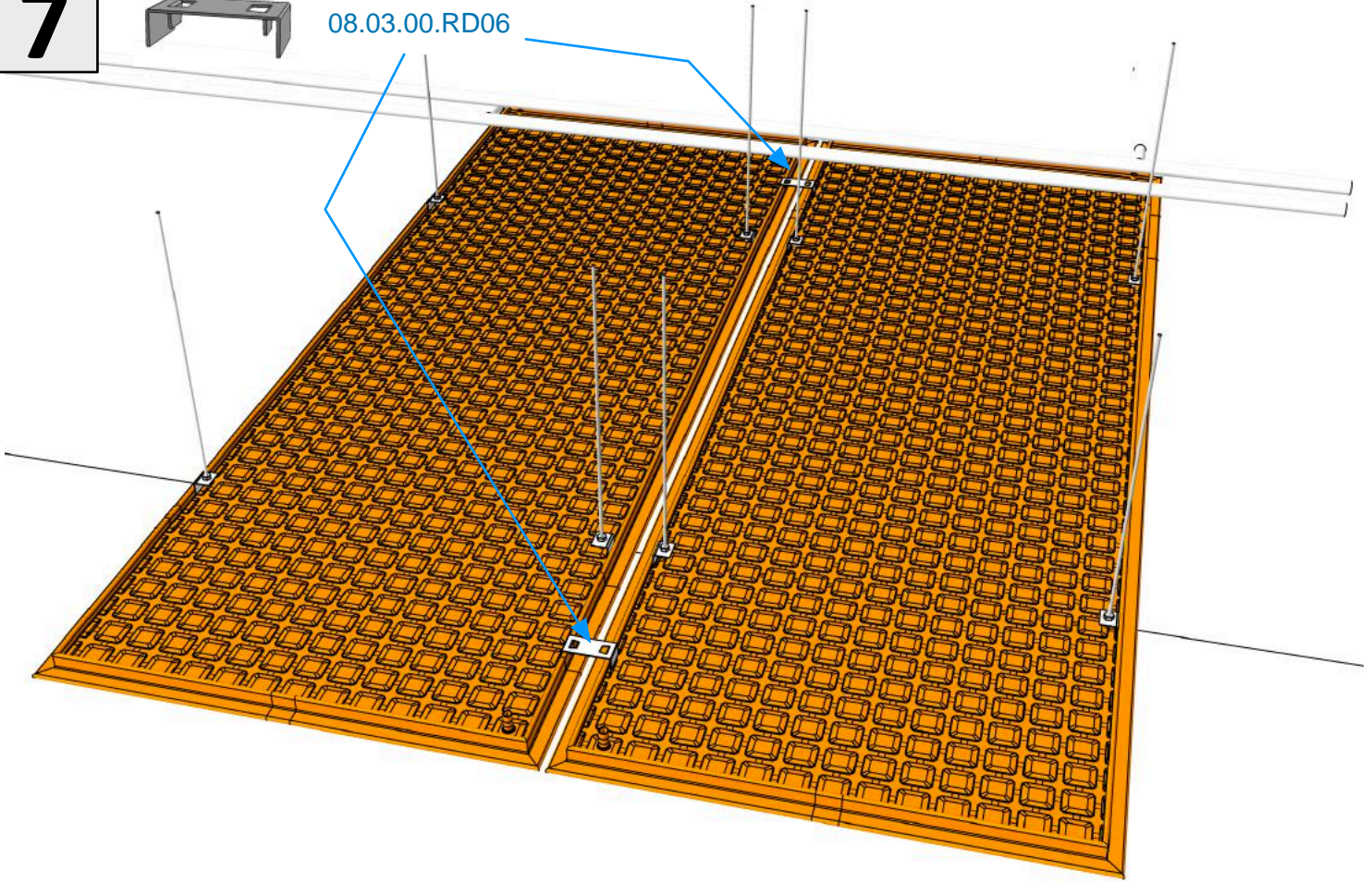
08.20.15RDL.W.X



7



08.03.00.RD06

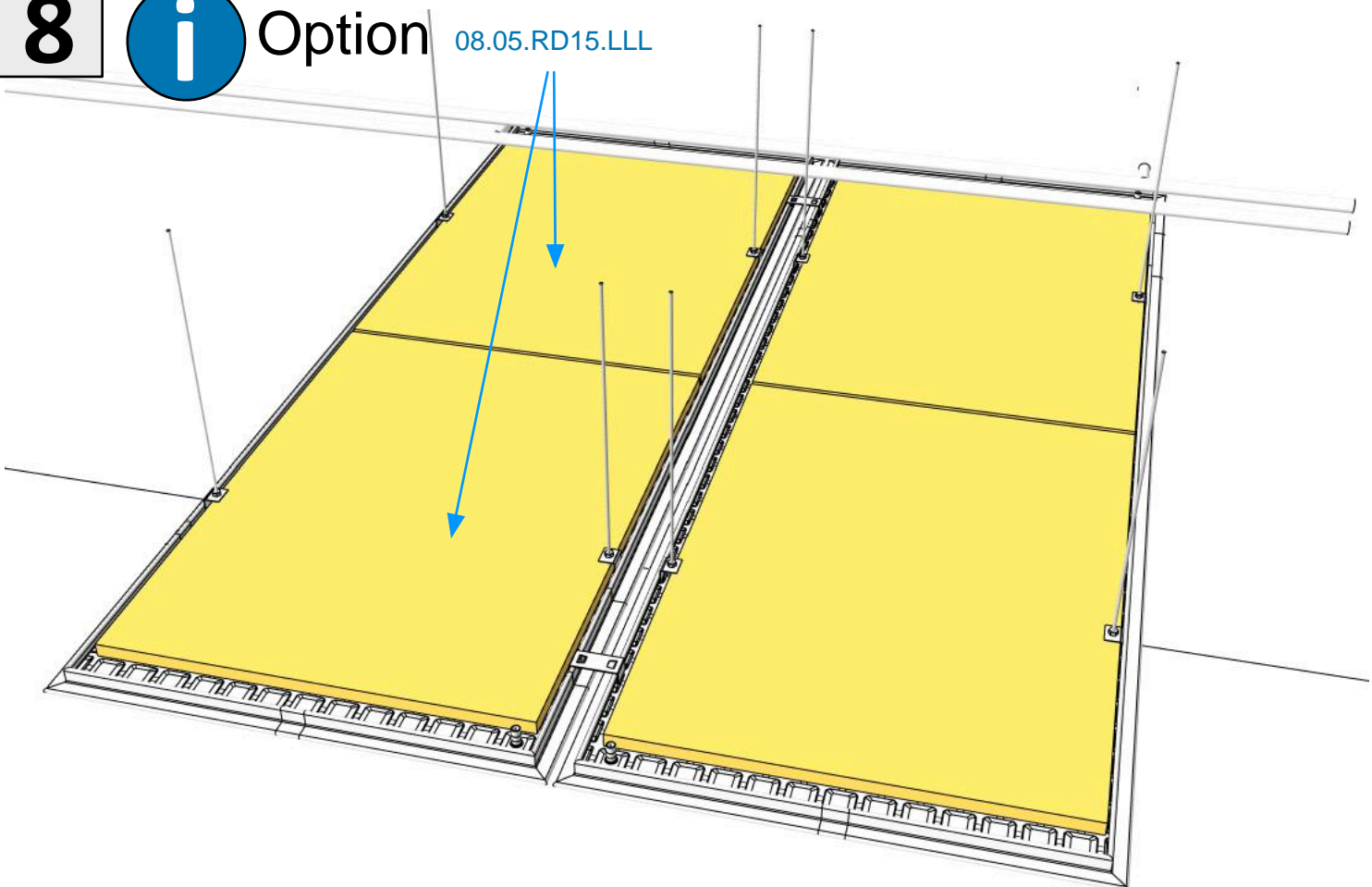


8

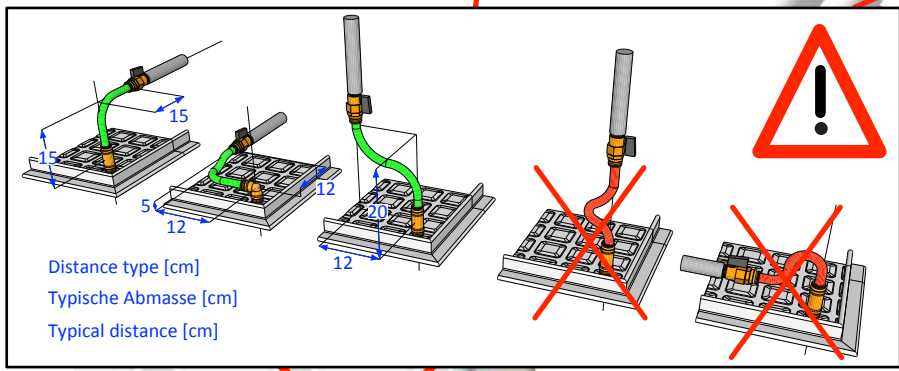
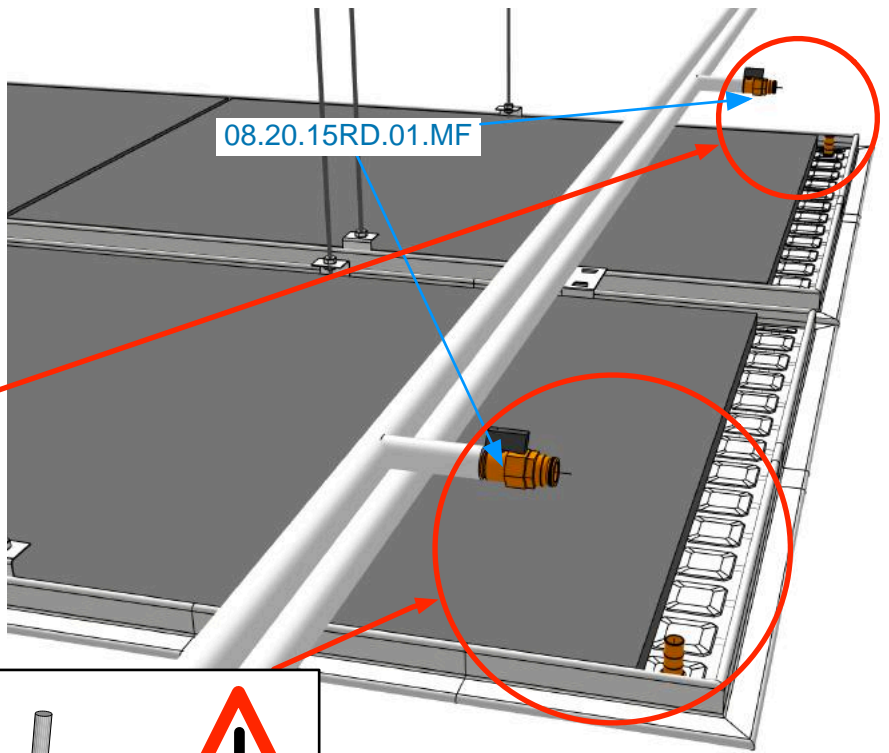


Option

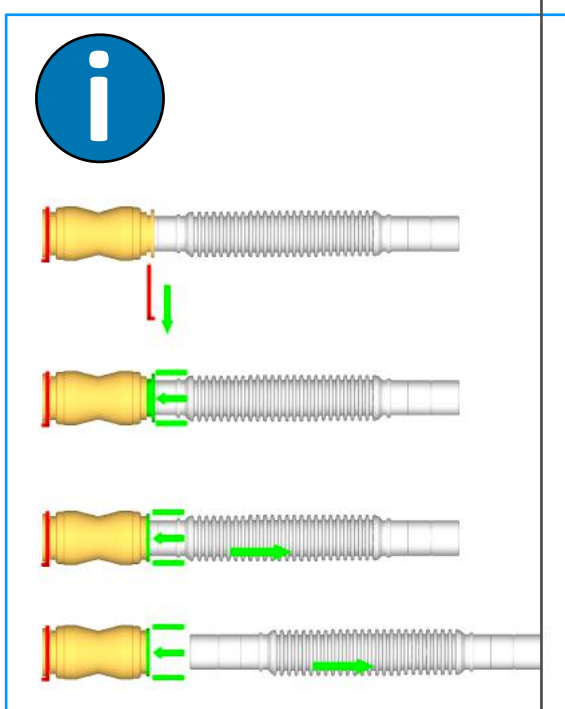
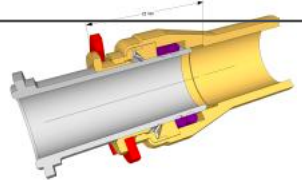
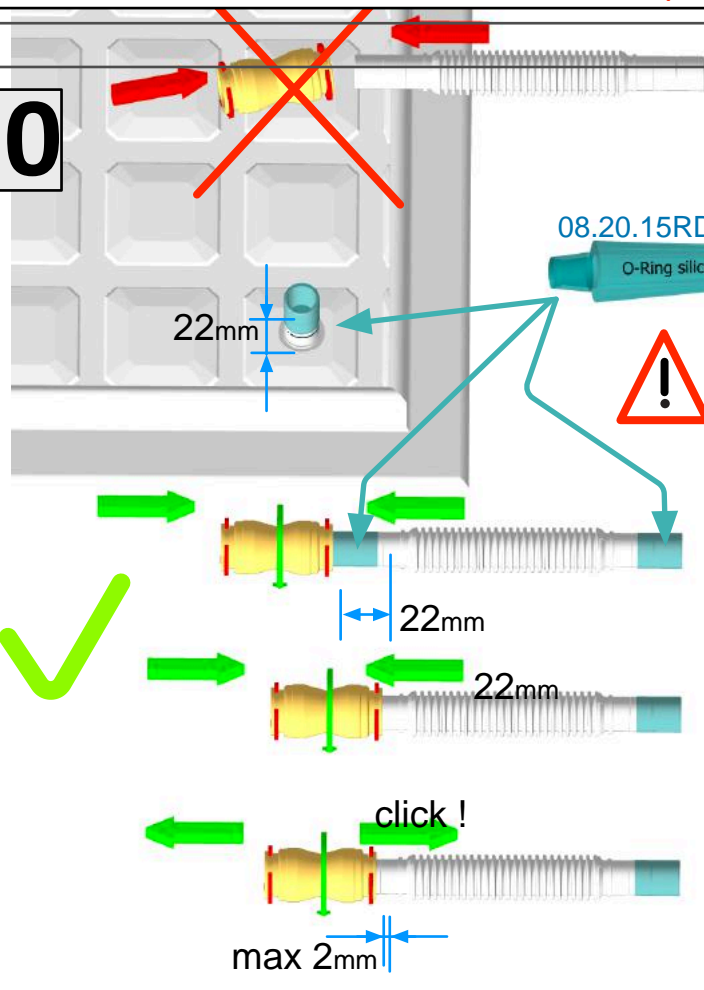
08.05.RD15.LLL



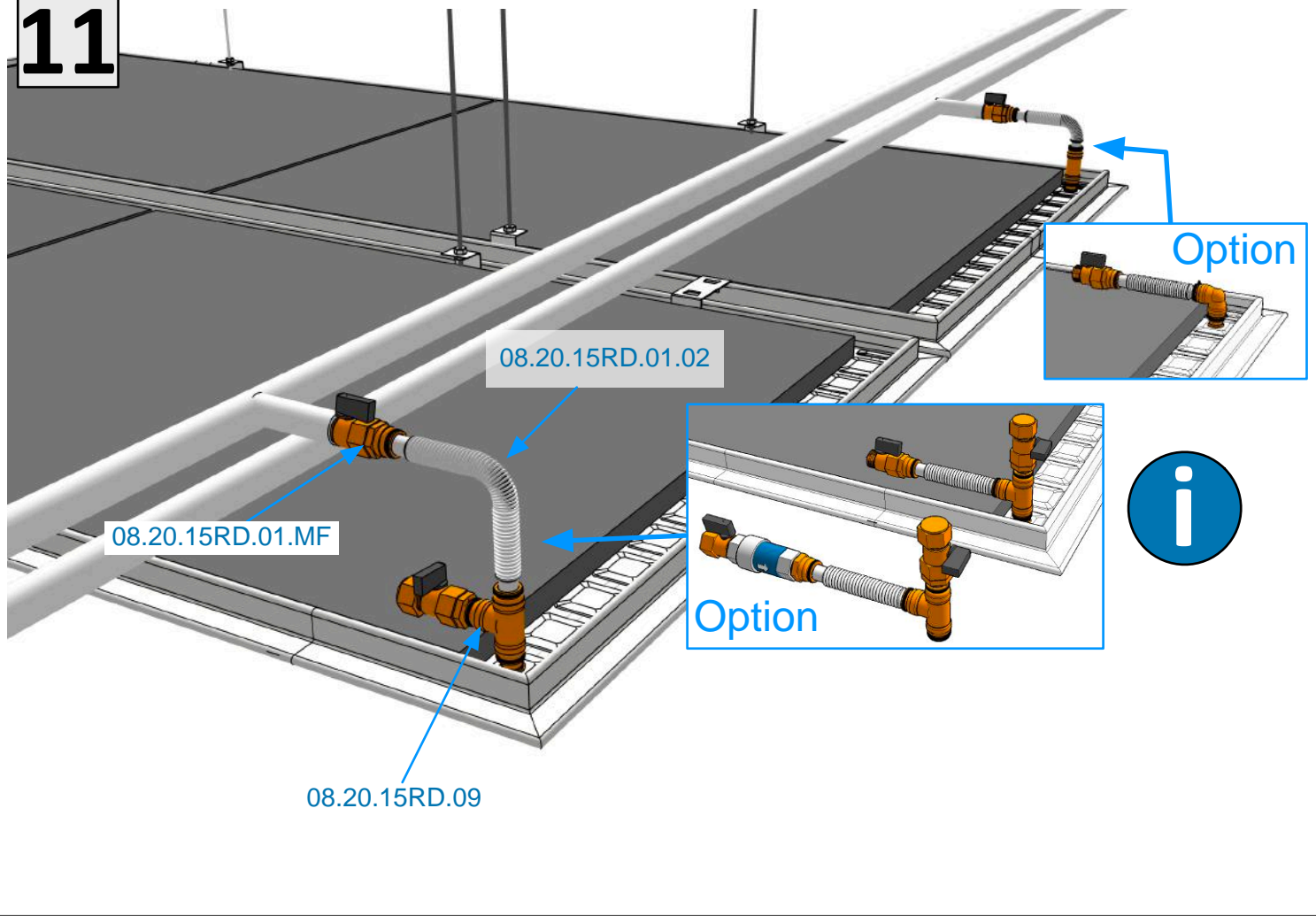
9



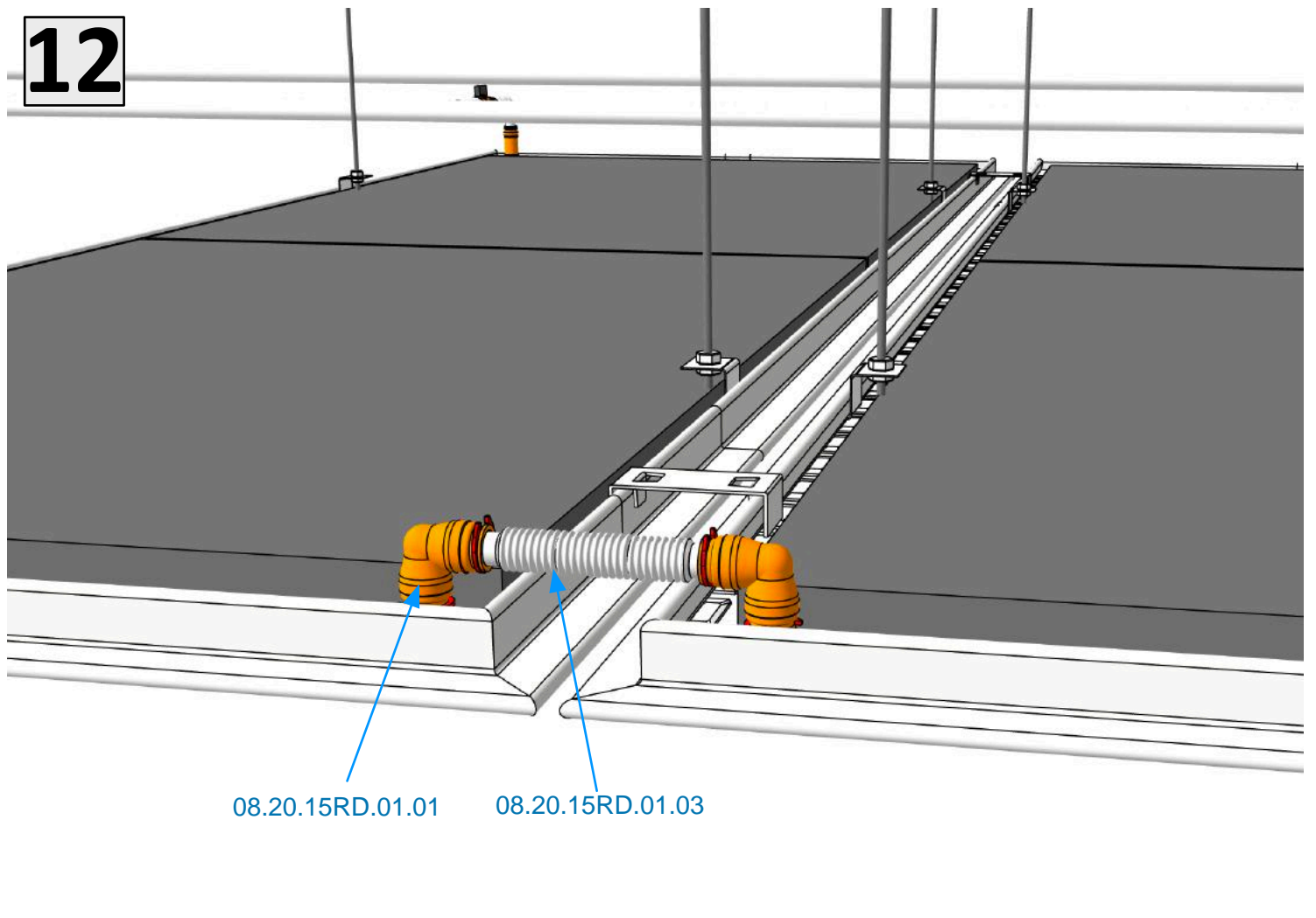
10



11

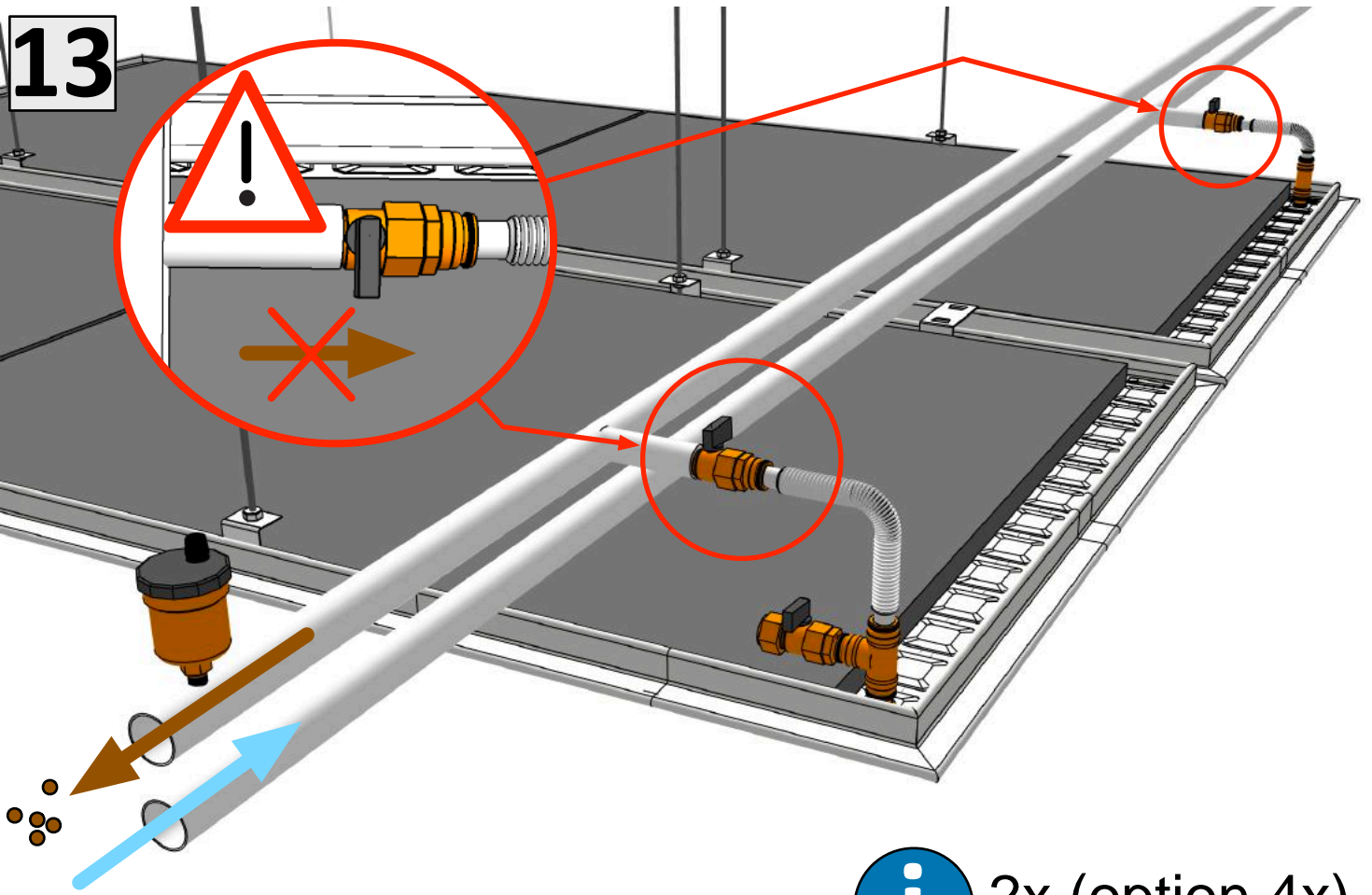



12



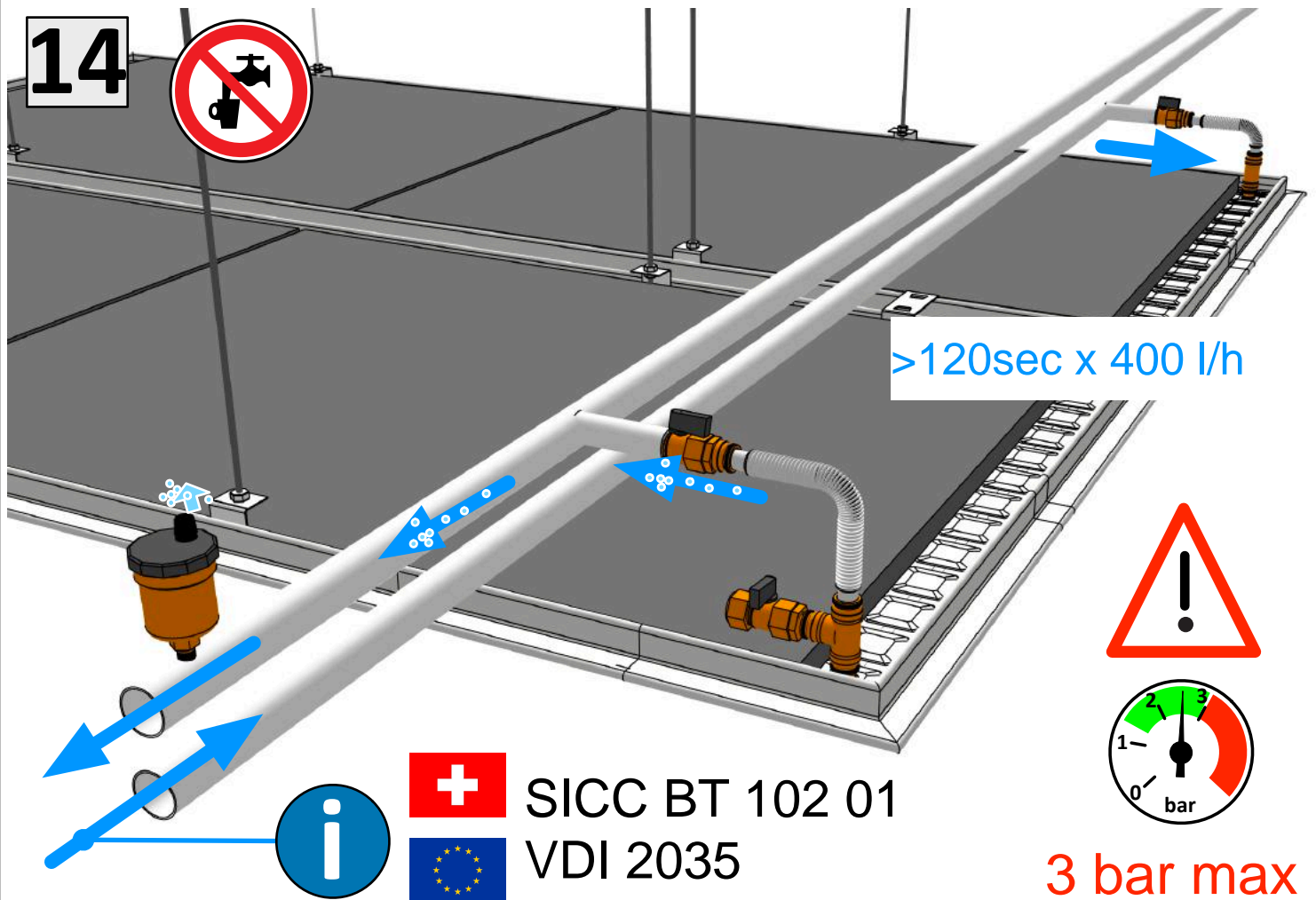


13



 2x (option 4x)

14

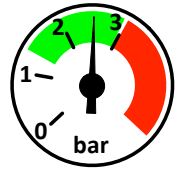


>120sec x 400 l/h





SICC BT 102 01  
VDI 2035



3 bar max !

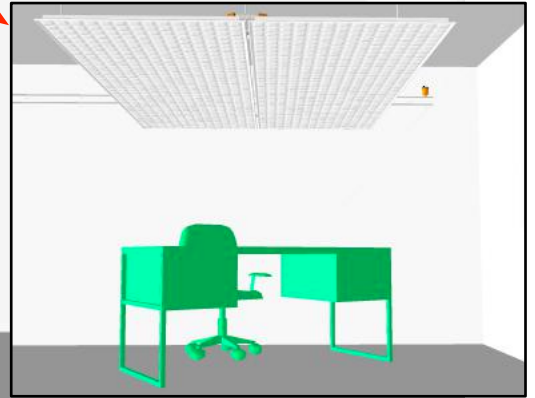
15



2bar



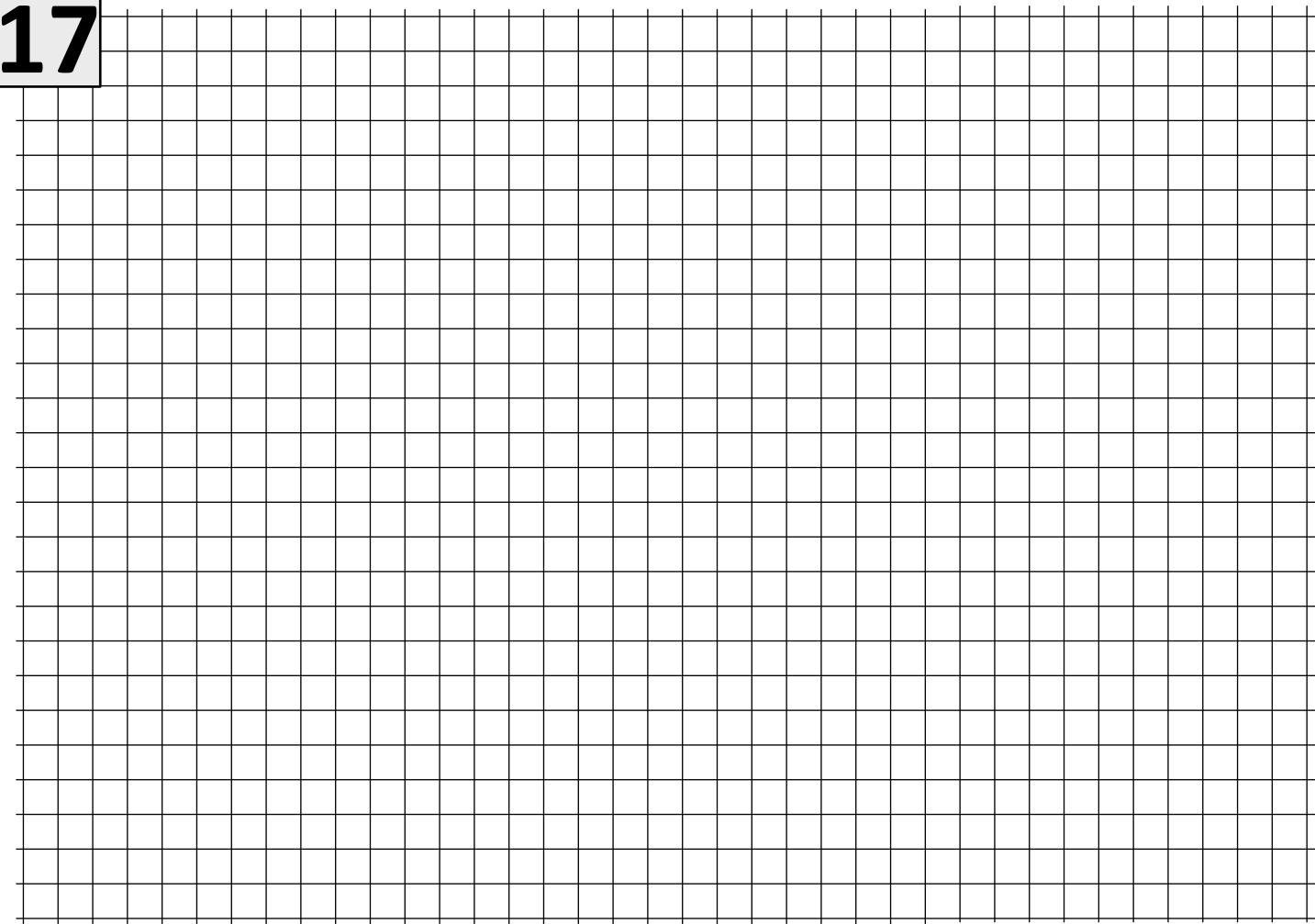
ok?



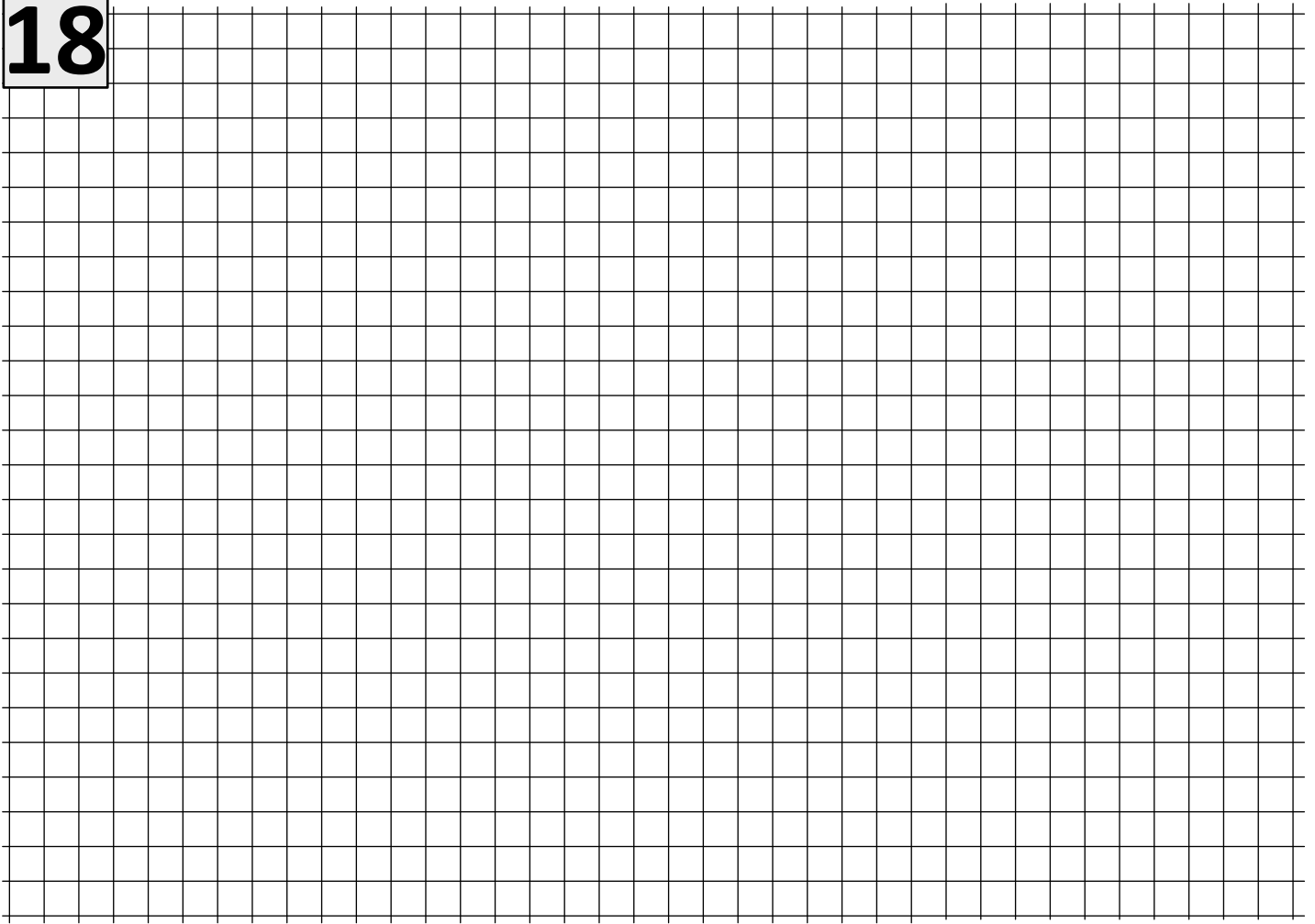
16

A large grid of graph paper for writing or drawing.

**17**



**18**





## Contact :

Soltop Energie SA  
ZI Ile Falcon  
Rue des Sablons 8  
CH-3960 Sierre

Soltop Energie AG  
St.Gallerstrasse 3  
CH-8353 Elgg

Tél.: +41 27 451 13 20

Tél.: +41 52 397 77 77

[info@kigo-swiss.com](mailto:info@kigo-swiss.com)  
[www.kigo-swiss.com](http://www.kigo-swiss.com)